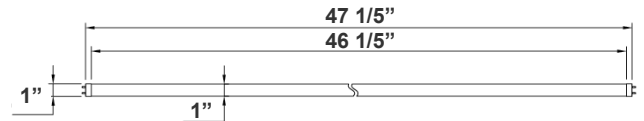


T8 SERIES COMMERCIAL INDOOR LIGHTING

T8-EZ6-GS-4FT-18W-30K-F
T8-EZ6-GS-4FT-18W-35K-F
T8-EZ6-GS-4FT-18W-40K-F
T8-EZ6-GS-4FT-18W-50K-F

Customer Name: _____
Project Name: _____
Note: _____ | Type: _____



47 1/5"(L) X 1" (D)

Crystal Glass T8 Tube switches from fluorescent tubes to LED, giving more cost efficiency by providing the same amount of lumen output with less energy consumption. The LED tube offers a soft and bright light distribution.

Features

- Type A + B (Dual UL)
- Type A: With Existing Ballast - UL No. E366061
- Type B: Ballast Override (AC Direct), Connect One End or Both Ends (Dual Function) - UL No. E342884
- 5-Year Warranty
- Frosted Lens

Technical Specifications

Electrical:

- Voltage: 120-277V; 50/60Hz AC
- Power Factor: >0.90
- THD: <20%
- Wattage: 18W
- Efficacy: 120 LPW

Lighting:

- Dimming: Non Dimmable
- Total Lumens: 2160LM
- Color Temperatures: 3000K/3500K/4000K/5000K
- Color Rendering Index: CRI ≥ 80
- Beam Angle: 120°
- Rated life: 50,000 hrs

Mechanical:

- Base Type: G13
- Glass Tube: Frosted
- Ambient Operating Temperature: -13°F to 113°F
- IP Rating: IP20 (Indoor)

Applications:

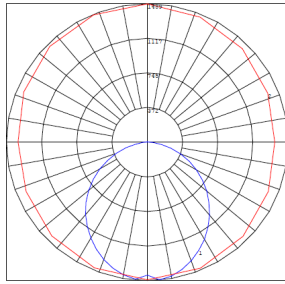
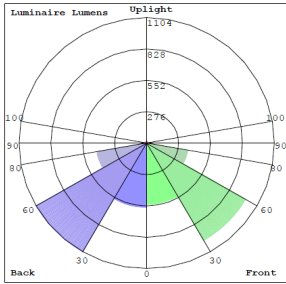
- Direct Fit 4 T8 LED tubes do not burn out easily and provide bright and even lighting to schools, office spaces, retail stores and storage rooms.

Other Models:

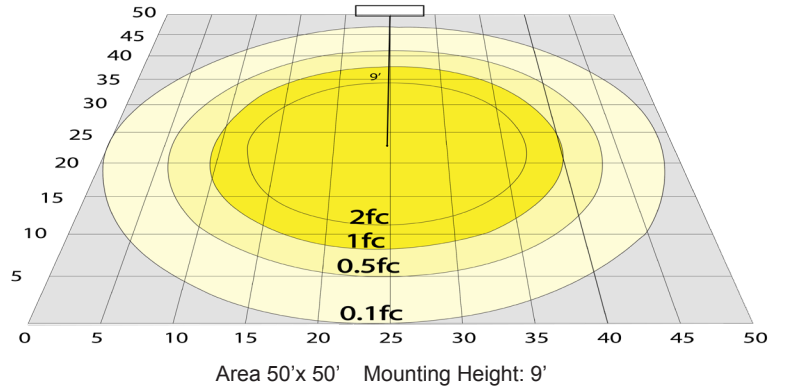
- 18W | 2160LM | T8-EZ6-GS-4FT-18W-30K-C
- 18W | 2160LM | T8-EZ6-GS-4FT-18W-35K-C
- 18W | 2160LM | T8-EZ6-GS-4FT-18W-40K-C
- 18W | 2160LM | T8-EZ6-GS-4FT-18W-50K-C



Photometrics: T8-EZ6-GS-4FT-18W



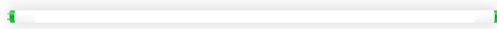
BUG Rating: B2-U2-G1



Other Views:



Close-up View



Front View



Socket View

Performance Table: T8-EZ6-GS-4FT-15W

MODEL NO.	Wattage	Voltage	Lumens	Color Temp.	BUG Rating	LPW
T8-EZ6-GS-4FT-18W-30K-F	18W	120-277V	2160LM	3000K	B2-U2-G1	120
T8-EZ6-GS-4FT-18W-35K-F	18W	120-277V	2160LM	3500K	B2-U2-G1	120
T8-EZ6-GS-4FT-18W-40K-F	18W	120-277V	2160LM	4000K	B2-U2-G1	120
T8-EZ6-GS-4FT-18W-50K-F	18W	120-277V	2160LM	5000K	B2-U2-G1	120

Sample Ordering

Model Material Size Watt Color Temp. Lens Type

T8 - EZ6 - GS - 4FT - 18W - [] - C

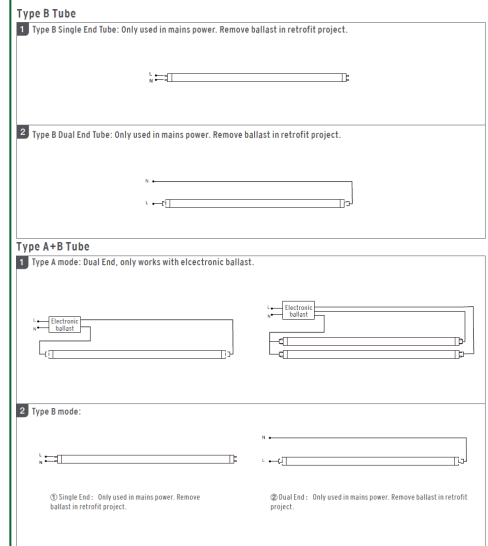
30K = 3000K
 35K = 3500K
 40K = 4000K
 50K = 5000K

Example:

1. T8-EZ6-GS-4FT-18W-30K-C

(FOR 18W 3000K T8 4FT TUBE LAMP 120-277V)

WIRING DIAGRAM:



Other Models: T8-EZ6-GS-4FT-18W-C (Clear Model)



Close-up View



Front View



Socket View